

# Earth Embedded Uplighters

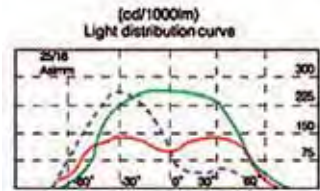
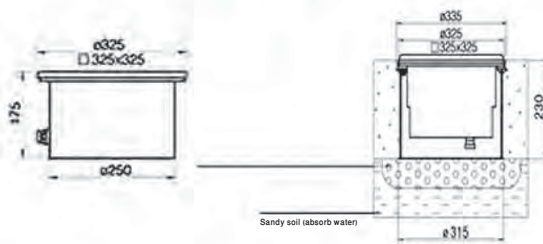
Highly compact, recess ground embedded uplighter with high protection stainless steel ring, toughened glass designed to recess into the surface of paths, driveways, aviation areas, gardens, etc. suitable for various applications

## Materials & features:

- Non corrosive high pressure die-cast aluminium body with superior heat release
- Supplied with integral in-built control gear along with high protected stainless steel ring and silicon rubber gasket
- 10mm thick tempered glass, with maximum bearing capacity 2000kg evenly
- Water proof stainless steel gland with Silicon rubber ring and high temperature resistance upto 250°C

## Applications:

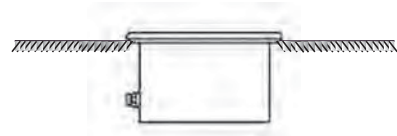
- Sculptures, Residential areas, Parks, Gardens, Pedestrian streets, Squares, Industrial and Aviation areas, etc.



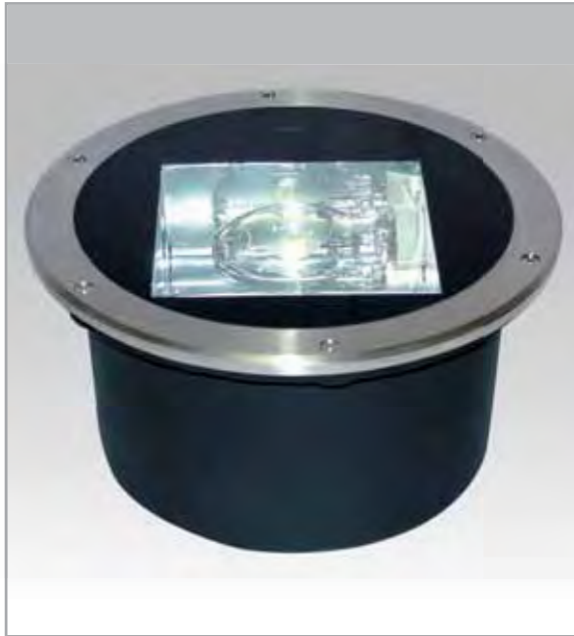
SONT-150 MHE27150W

## INSTALLATION / MOUNTING

The complete fixture can be buried under the surface with adequate depth measurements and with complete drainage protection



WARRANTY 24 MONTHS



| LAMP TYPE & WATTAGE | COLOUR    | WEIGHT Kg | CODE REFERENCE | PACKING |
|---------------------|-----------|-----------|----------------|---------|
| MH E27 70W-150W     | DARK GREY | 7.00      | UPR150/628     | 1X1     |
| SON E27 70W-150W    | DARK GREY | 7.00      | UPR150/628     | 1X1     |